



## Foreword

DSM and Art is a marriage that already exists for a long time. In Holland DSM has an extensive art collection displayed in it's offices and artist are sponsored regularly by the company. It is a long tradition that now has made its way to China in the first art book of JDR. Human emotions, feelings and passion are the seeds out of which art is born and inspiration is found in people and nature. It comes pure and unspoiled from our soul and our deepest feelings. It connects people independent of race, background or region. It inspires and touches. Of all things mankind has ever produced art is the most important one and of unvaluable importance for our society. Art, whether it is paintings, sculptures or music, is the highest, most sincere and most original form of communication. What better way does there exist to express the connection between JDR and our most valued customers than through the communication of art? Communication and understanding is the basis for our relationship. It has made us successful while respecting our people and our planet. The presented sculpture of Hans Mes combines in one all the relations JDR and our most valued customers have: the resin we produce in order to make your product of the highest quality and efficiency, the business your products serve and, the care for our people and planet. I hope this artbook and sculpture confirm our close relationship and will inspire us all in the spirit of art to strengthen it further in the future

## 前言

DSM和艺术的结合已经有很长一段时间了。在荷兰，DSM办公区展示了相当多的艺术收藏品，并且公司还定期向艺术家提供资助。这个传统由来已久，现在这一做法正挺进中国，由第一本艺术书籍JDR可见一斑。人类的情绪、感受和激情是艺术的种子，灵感源自人和自然。它来自我们心灵深处的情感。它将不同各族、背景或地区的人联系在一起。它给人以灵感和触动。在人类所创造的所有事物中，艺术是最重要的一种，它对这个社会举足轻重。艺术，无论是画作、雕塑还是音乐，都是最高层次、最发自肺腑、最有创造力的沟通形式。对于JDR和我们尊贵的客户之间的沟通，除了仰仗艺术，还有什么更好的方法吗？沟通和理解是联系的基础。因为尊重人们、尊重地球，我们才获得了成功。这个Hans Mes雕塑将JDR和最尊贵的客户之间的联系合而为一，我们生产的树脂可以使您的产品质量出众。效率更高，您的产品在行业内的出色表现也体现了我们对人们和地球的关爱。我希望这本艺术书和雕塑成为我们亲密关系的见证，希望它以艺术的精神激励我们未来继续加强双方之间的关系。

Hans Mes sculptor

Born in Utrecht, 1950, Hans Mes studied at the Groningen Academy of Arts ( Minerva) from 1973 to 1979, where he graduated in two disciplines: Sculpting and Monumental Design.

Disciplines:  
Monumental projects, sculpture, relief, portraits, medals, poems, watercolors, environmental design, and computer graphics.

Materials: Bronze, stone, steel, red copper, brass, wood, waterworks, concrete, resins and plastics, aluminum.

Working as a full time sculptor Hans Mes already sold more than 1400 sculptures to companies (76), government (54), institutions (48), museums and cultural centres (3) as well as to private collectors (245) during a professional and self supporting career of 25 years. Starting his design process he gathers all the information which he feels is relevant. He digitally projects the sculpture onto the images of the location. This allows him to view the sculpture in its specific surroundings from all angles where the sculpture is to be placed. He also assesses the expressiveness of intrinsic and spatial aspects. After an extended research Hans Mes determines which materials and techniques will best capture the essence of the design. His workshop is geared to a lot of different techniques and includes a bronze foundry; here he works full time on commissioned works of art. Hans Mes characterizes his art as visible symbols of things invisible.



Hans Mes 雕塑家

Hans Mes，生于1950年，荷兰人。1973年至1979年在Groningen of Arts 学习。

专业：雕塑和纪念碑设计。

专业技能：纪念碑设计，雕刻浮雕，肖像纪念章，水彩画诗，环境设计和计算机绘图。

材料：青铜、石材、钢、紫铜、黄铜、木材、水、水泥、树脂、塑料和铝等。

经过25年专业的独立创作，Hans Mes有近1400件雕塑品被公司、政府、协会、博物馆、文化中心和私人所收藏。他收集所有的有关信息开始他的设计过程，用电脑绘制出在指定位置雕塑作品的图像，并且从各个角度观察这个雕塑的位置和特有的环境以确定作品内在的表现力和立体的表现力。在广泛的研究后，选择材料和工艺来表达设计的精髓。Hans的车间适合于多种不同技术工艺的制作包括青铜的铸造，在那儿，Hans完成了一件又一件的艺术作品，把无形的东西用艺术作品表现出来。

旅

心自有途，  
随之而行，  
以形色之特性，  
创言语之共鸣，  
记其命。

吾慕空相之沉静，  
志虽坚而意不停，  
勾勒其形，  
直至无尽。

汉斯·迈斯

Travelling  
Something in me has its own way  
I follow travelling  
With characters in form and colour  
I create words from resonance  
Writing my story  
I follow the silent way of images  
However fixed my ideas are moving  
And sketch their way  
Along unseen places

Hans Mies

## Hans + DSM

At the invitation of Paul Booms, the former GM of JDR, Hans Mes came to create a number of sculptures at the DSM Jinling plant in Nanjing. After Paul left, Stephan Dusault, the present GM welcomed this project with great enthusiasm and even added new works to be created.

He started his work in a quiet corner with a nice view on the natural surroundings at the BTS factory on the 1st floor, where is a suitable separated place for him to design.

Hans Mes always communicates with the DSM people through his humorous words and expressive body language, as if they are a family. The raw materials for his works are quite widely scoped, but the sculptures are mainly made in composite resin. Here the assistance of DSM experts was in close cooperation to achieve the best results.

While gathering inspiration, he often thinks with his hand supporting the lower part of cheeks, looking out of the window, trying with different tools; pinching clay, or photographing semi-finished artworks.

Within 4 months of hard work, 5 pieces of artwork were born...

### Hans + DSM

应JDR前任总经理Pual Booms邀请, Hans Mes来到DSM开始了一系列的雕塑创作。现任总经理Stephan Dusault接任之后, 这个艺术项目得到了更多的支持和关注。

在技术服务部一楼一个带水池的幽静的角落, Hans开始了他的创作。

Hans 经常用他那幽默的语言和富有表现力的动作跟周围的员工交流, 仿佛他们就是一个大的家庭。Hans用于创作的原材料非常广泛, 但主要的材料还是公司的产品——树脂! 他和DSM的专家们经常交流树脂的性能和应用, 以争取获得作品的最佳艺术效果。

在创作的时候, 他时而托腮沉思, 时而凝视窗外(寻找灵感?), 时而拿着工具埋头苦干, 时而捏着粘土挥汗如雨, 时而拿着相机拍摄半成品.....

经过四个月的辛勤创作, 五件精美的艺术品诞生了.....







## Resin's Reasons

Composing resins sounds like a song  
Chemistry's mystery mixes a melody  
Combining unlimited colours and forms  
With tones of materials in mind  
We move like a ship sailing seas of ideas

The reach of research expands environment  
Connecting knowledge will make people grow  
Like leaves of a plant and strong like marble  
Our work creates beauty when resin's reason  
Is the art of the making

Hans Mes  
July 2006



In the sculpture Resin's Reasons sculptor Hans Mes brought several aspects together into one form to symbolize a dream in composite resins. On one side the artwork shows the front side of an approaching ship as if it was shaped in marble. The speed of the ship and still image of the marble seem opposite to each other. Yet it shows how technological and creative forces can result in fast development while they can deliver beauty on the long term. The other side shows a human caring for the environment and growth, visualized by a plant. This figure is formed like a roughly carved hollow leaf, emphasizing the inner values of protecting nature. Not only the environment's nature is meant by this attitude. Also the inner environment that is embodied by the hollow form reveals growth in some kind of mix between technology and creativity. Composing resins and finding top selling products have much in common. Both are fine tuning processes based on the newest knowledge and trends.

As a whole this work of art refers to the beauty of development in creating new materials, new forms, new ways in serving the resin's market. It reveals that sharing the care for environment and people also reveals the beauty that resin can deliver.

That's why the making and creating joins both material supplier and product developer in the art of their making.



## Joined Forces

Flying sky high like a bird into future  
Lends a view into the dimensions of power  
Joining forces like feathers in a wing  
Is a colourful and strong motivation  
To travel on the road for branches

Hans Mes  
July 2006



The sculpture *Joined Forces* expresses the power of cooperation as a means to success. It's all about the clustering taking place in the automotive industry, thus increasing strength and capacity to serve several auto industry brands with bumpers and truck front parts. This is why sculptor Hans Mes created a two sided form on a top shaped base. One side looks like a car bumper with 3-dimensional brush strokes emphasizing speed. The other side is formed like a huge accolade, a brace form in which the several strokes are joined, symbolizing how various automotive industries join their forces resulting in one strong player on this market. Gathered like the feathers of a bird the sculpture seems to fly like a spaceship into a prosperous future. The artwork is attached to a triangular wooden base referring to the graphic of a top result but also a mountain from which the bird stretches his wings, getting higher by working together supported by mutual goals.



## Moving Together

Moving from job to job  
Developing yourself and others  
Working on changes made you and us familiar  
to manage the direction of growing together

Togetherness works,  
Feels like a wheeled suitcase  
As a framework of family wherever you may go  
to carry the contents of life's dynamics  
in sharing, step by step  
your way, your family, your world

Discovering what moved your work  
we know this step will make you flourish  
Because emotion in motion is why  
That makes us feel like family

Hans Mes  
June 2006



The sculpture Moving Together has been designed by the Dutch sculptor Hans Mes on the occasion of Mr. Ed Sheu's departure to the Netherlands. It is based on an interview that he permitted him, so he could tailor the design into something personally meaningful as a special gift from Mr. Paul Booms.

It happened to be an inspiring moment after he asked Ed for his working attitude. He replied that his working spirit is based on the power to cherish his family and make it flourish. Family is the small society in which we practise and learn for the larger society of our future world. First moving with his family to Taiwan, studying in the U.S., then back to Taiwan and now from the Chinese mainland, Mr. Sheu decided to settle in Holland with his family.

The discipline taught from father to son and the care in keeping together wherever the family might be located gave Hans Mes the idea of a trolley suitcase. He visualized the up going outlines of the suitcase as a husband and wife, his father and his daughter. Keeping each other together during hard times and now sharing the flourishing of his family life this suitcase shows an opening flower at the bottom.

The company philosophy -Growing Together- made Hans Mes choose for resin as the material for his artwork. Togetherness in family life is a personal source of success in Mr. Sheu's work for DSM Fiber Intermediates. But its good internal and external relationships as a worldwide materials supplier made DSM's products travel just the same around the globe successfully. All symbols forming this sculpture express the importance of such good relationship in motion, wherever we may go. That's why your work evoked this gift:

A piece of art from the heart.



2003 OUTLAWED  
Kornalijn-park, Groningen, Holland 3 x Coated steel and bronze, 6 mtr.

OUTLAWED  
Three different opened cages  
rising up to 7 metres high at the  
Kornalijnpark in Groningen  
symbolise their meaning as the  
first monument for all excluded  
people in the world. This group  
of sculptures has been revealed  
on 04-16-2004.





1995 POLE VAULTER  
 Philips plant, Drachten, Holland. Steel, 15 mx 10 m., 1176 cutout marks.



2004 MILKBOATMAN  
Belt-Schutsloot, Holland Coated steel, length 3,5, high 2,75 mtr.



1989 HOROWITZ  
Philips DAP plant at Drachten, Holland.  
Bronze, stainl. steel, granite, 3.20m.



1996 JOHANNES VAN VLOTEN  
Humanists memorial, Deventer, Holland.  
Bronze, 3.90 m., width 2 m.



1998 PORTRAIT KEUNING-HALL  
Med. Institute Groningen University, Holland.  
Steel, 60x70 cm.



1992 FLYING START  
KLM Flightacademy, Eelde Airport, Holland. Copper, length 5.60m.





1992 FEDERA  
Park The Braak, Eelde, Holland.  
Stone, bronze, 3.80 & 5.60m high.



1992 CROSSING BORDERS  
Siebengewald, Gem. Bergen(L), Holland  
Stone, steel, bronze, 3,50m. High



1983 BEEES  
Social Work Dept., Groningen, Holland. 3 Honeycombs with 58 bees, bronze.



1985 SENTINEL  
Fortress of Bourtange, Holland. Bronze, 2.20m.



2002 ENTRANCES  
Borgercompagnie, Holland Stone, steel, 3,50 m. high





2002 FARMERS, CITIZENS, FOREIGNERS  
Borgercompagnie, Holland Steel, 4,75 m. high



1981 VERTEBRA  
Prison Groningen, Holland. Bronze on black granite, 1.20 m.



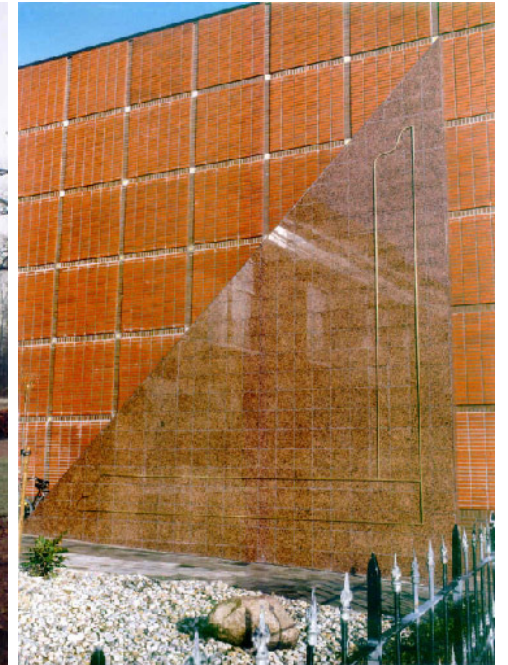
2000 JAN GERKO WIEBENGA  
Hanzehogeschool, Groningen, Holland.  
Steel portrait, 3 m. high.



2004 SOUTHERN SEASIGHT  
City of Harderwijk, Holland  
Green marble, bronze, steel, 3.5x5x7 mtr.



2002 STORY FROM AFAR  
Borgercompagnie, Holland  
Steel, 3 mtr. High



1992 SQUARE  
Freemasons Lodge, Groningen, Holland.  
Brass on granite 8 x 8 meter.





1981 FEATHER  
Cultural Centre, Groningen Holland. Bronze, 2.50m.



2002 TRACK TEACH TIMES  
Dinxperlo, Holland Coated steel and granite 4,5 mtr. High



1998 LOST TOWERS  
Weiwerd cemetery and Heveskes, Delfzijl, Holland. Copper. Height 2.30 and 2.40 m.



2001 GAMMA  
Hanzehogeschool Groningen, Holland. Steel, 4,5mtr.



2000 PEAT-SHIPPING  
Cingelkolk, Zwartsluis, Holland. Steel, granite and fountains, 5m.





1998 THE LEAP  
Philips DAP, Zhuhai, Guangzhou China. Copper, stainless steel 6,12m. High



1986 SHIPTOWING PEOPLE  
Oude Pekela, Holland Bronze, 1,80 x 2 x 1 m



1990 CLAYPRESS  
Oostwold, Scheemda, Holland.  
2 Basalt, bronze forms, 2.60m.;2.20m.



1979 WRESTLERS  
Sporting Centre Groningen, Holland  
Freestone, 1.50 m.

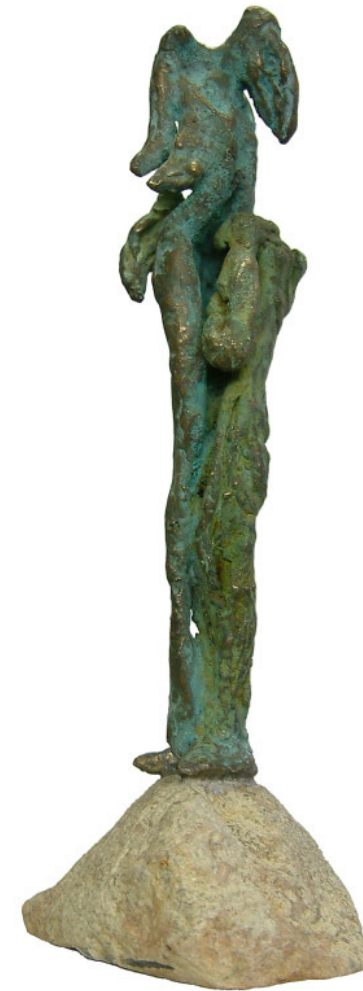


1998 FREIA Sculpture & 20 miniatures Freia Co., Gron., Holland. Copper 3,60m.h igh + 40cm b ronzes.



1987 ALTEA TROPHY  
Annual Award Altea Hotels. Bronze, 45cm.





2006 HUGGING MONSTERS  
Sculptor's collection. Bronze, 30cm.



2001 PAS DE DEUX Kiestra collection Stone, bronze, gypsum 35cm



1991 HOSPITALITY  
Bronz, 35cm



2006 SWIMMER  
Sculptor's collection bionzs, geanite, length 70cm.



2006 CLOSE DISTANCE  
Sculptor's collection bronze French marble, 1mtr.





2005 A heart creates the neighbour's place to live



2006 SOUND FRIENDSHIP  
Randag Collection, Bronze, Steel, Soundstone 50cm high



帝斯曼复合材料树脂集团  
金陵帝斯曼树脂有限公司

江苏省南京市中央门外太新路81号  
邮编: 210038  
电话: +86 25 85493863  
传真: +86 25 85564848  
网址: www.jdr.com.cn

DSM Composite Resins  
Jinling DSM Resins Co., Ltd.  
No. 81 Taixin Road, Nanjing 210038, China  
Tel: +86 25 85493863  
Fax: +86 25 85564848  
Website: www.jdr.com.cn

Hans Mes

邮箱: info@hansmes.com  
网站: www.hansmes.com  
地址: Winschoterkaade 11, 9711EA Groningen, The Netherlands  
手机:(中国) 0086-13611581462  
手机:(荷兰) 0031-(0)650562426

E-mail: info@hansmes.com  
Website: www.hansmes.com  
Address: Winschoterkaade 11, 9711EA  
Telephone/Fax: +31(0)50 31 37 564  
Mobile China: 0086-13611581462  
Mobile Holland: 0031-(0)650562426

## Commissions

WRESTLERS ULNA	Sporting Centre Groningen, Holland National Museum Twente, Enschede, Holland	1979	Freestone, 1.50 m. Three bronzes on freestone base, 1.33 m.
VERTICAL ANTS FEATHER	Penitentiary Clinic, Groningen, Holland Car Ellis P.R. Vermeulen, Groningen, Holland Cultural Centre, Groningen, Holland	1981	Bronze on black granite, 1.20 m. Bronze red of 60x80 cm. Bronze, 2.50 m.
MONSTRUM	Public Park Oude Held, Groningen, Holland	1982	Bronze, height 1.85 m.
BEES	Dept. Social Work, Groningen, Holland	1983	3 Honeycombs with 58 bronzes on 3 locations.
MAN IN RECLINING CHAIR DRECKSCHNABEL	Bravestraat, Groningen, Holland, Bronze, 1.85 m. Rijke Stads, Groningen, Holland	1984	
COLDEN RIDER REE SENTINEL MAN WITH DOG-CART SKYLINE FALLING FIGURE	Annual Ink series trophy Gift for HMR Queen Juliana of the Netherlands Fortress of Bourtange, Holland Oude Pekela, Holland Gift Construction Co., Stadssanaal, Holland Cemetery Winschoten, Holland	1985	Bronze, 2.40 m. Bronze, 25 cm. Bronze, 35 cm. Bronze, 2.20 m. Bronze, length 4 m, x 1.85 m. Bronze, 20 cm., 110 pcs Oak and Finnish granite, 1.60 m.
HEADLINE FEDLAR SHIP TOWING PEOPLE FRATRICIDERS	Nat. Journalists Assoc. Annual Press Award Town hall of Oude Pekela, Holland Pekelder Hotel, Oude Pekela, Holland Nieuwleusen Hoogeschool Suppenter, Holland	1986	2 Bronzes on freestone, 20 cm. Bronze, 2.35 m. Bronze, 1.80x2x1 m Bronze, copper, 3.50x2x1 m.
ALTA TROPHY ILL WEEDS GROW Apace	Annual Award Alta Hotel Group Pekelhof, Oude Pekela, Holland	1987	Bronze, 45 cm. 7 Bronzes from 1.20 m to 3.50 m.
SEESIGHT NEWSPAPER	City Hall Delfzijl, Holland Annual Press Award Nieuwsblad v/h Noorden	1988	15 Bronzes, 8 granite sculptures 6x25x6 m. Bronze, 40 cm.
FLOATING FORMS FLORIN ARN/AMRO HORDWITZ	House rental Co., Groningen, Holland Diserit Bank, Assen, Holland Philips DAP plan in Dronen, Holland	1989	2 Copper forms, length 2 m. 2 Copper forms, length 2.10 m. Bronze, stainless steel, granite, 3.30 m high
CLAYFRIS FEATORM PROFILE FORM DRAGGED LINES FLAGS	Oostwold, village of Schieda, Holland Weiteveen, Schoonebeek, Holland Weiteveen, Schoonebeek, Holland Highway Constr. Centre, Groningen, Holland Design for State Highway Dept., Germany	1990	2 Basalt and bronze forms, 2.60 m, 2.20 m. Basalt and bronze, Length 4.60 m. Basalt and bronze, height 2.60 m. 3 Copper forms, 1.60x1.20x0.90 m. Pilot project Noise reduction sculpted chain
HOSPITALITY LARRY'S SWAN CATENA CI CLOUDS AND CANALS	Alta Hotel Group, Holland Collection 't Hart, Groningen, Holland Collection Klinkenberg, Emmendingen, Germany Collection Langeland, Mol, Belgium Vredaan, Ommelanderswijk	1991	Bronze series, height 44 cm Glass, bronze, stone, 74x90x150 cm. Copper, length 180 cm. White granite, bronze, Height 3.60 m. White granite, copper, 4.5x2.5x5 m.
STONE OF WISDOM LOST TOWER-I LOST TOWER-II FEDERA FLYING START KLM CAPRICIOUSNA BLANK SKEET EDIBLE ACTION CONFIGURE ENCLOSURE SQUARE	Collection Ober, Emmendingen, Weiwerd cemetery, Delfzijl, Holland Heveskos church, Delfzijl, Holland Park The Brack, Eelde, Holland Flight Academy, Eelde Airport, Holland Langeland collection, Mol, Belgium Langeland collection, Mol, Belgium Collection Bouman, Dronen, Holland Collection 't Hart, Groningen, Holland Collection Jansen, Groningen, Holland Freemasons Lodge, Groningen, Holland	1992	Germany Granite, copper, concrete, 4.60 m. Copper, Height 2.30 m. Copper, Height 2.40 m. Stone and bronze, Heights 3.80 and 5.60 m. Copper, length 5.60 m. Basalt, bronze, steel, Height 2.50 m. Freestone and bronze, length 16 cm. White granite and brass, 2.15 m. Bronze, stainless steel, 80x90x30 cm. 2 Stone torso, 90 cm. Brass on granite 0 x 6 meter.
TERRAIN COGNITA CRANE	Abel Tasman monument, Looijgat De Raaiers house Groningen, Holland	1993	Portrait, coast shaped waterworks 8.5 x 5.8 m. Brass, height 1 m.
HORDWITZ	100 miniatures for Philips worldwide	1994	Bronze, stainless steel, granite, 38 cm High
MASTERMARKS FOUR VAULTER TWO MASTER HIGH FLIGHT	Creative ideas, Philips Customer Day 1996 Philips Dronen, Holland Primary school, Groningen, Holland Politie Security Co., Groningen, Holland	1995	Dronen Factory, 1800 employees. Steel, 15 m x 10 m., 1175 output marks. Steel, 2.00 and 2.10 m. high Bronze on basalt 6.5 m.

JOHANNIS VAN VLOTEN PORTRAIT PROF. BOERING TRIPLE TARGET CRAWL	Humanists memorial, Drenthe, Holland Dronal Institute Groningen University, Holland Dronal Institute Groningen University, Holland Swimming pool, Tiel, Holland	1996	Bronze, height 3.90 m., width 2 m. Steel, 30 x 40 cm. Bronze, various series length 70 cm. Bronze on white granite, 5 m. and 4 m.
EXCEL INTERSECTION POLYVAULTER trophy PORTRAIT KEUNING-HALL BUCKWHEAT & SPADES	25 objects for Philips DAP, Hong Kong, China. Med. Doctors waiting room, Groningen, Holland 100 miniatures Philips DAP, worldwide Med. Institute Groningen University, Holland Nijssen, Meppel, Holland	1997	Bronze, copper and brass, 25 cm. Red granite and copper, Height 1.10 m. Copper, height 3.7 cm. Steel, 60x70 cm. Steel and copper, Height 7.50 m.
GODWIN GRASS SPARKS BLACK STERNS MEMORIAL STONE MEMORIAL SCULPTURES THE LEAF TALENT FREIA FREIA SERIES SOLIDARITY	Zeeuwse, Holland Rijnswaard, Holland Rijnswaard, Holland Sculptural memorial, Vianen, Holland Cemetery and home, Oranjesoud, Holland Philips DAP, Zhuhai, Guangzhou China 100 coins, New Academy, Groningen, Holland Freia, New Academy, Groningen, Holland 20 miniatures, Freia Co., Groningen, Holland Rading Collection Groningen, Holland	1998	Bronze on French chalk, 1.80 m. Bronze on steel, height 5 m. Bronze on copper, height 5 m. Granite, steel, angles, 2.40 m. long Various stone, copper, steel 1.35 m. high Copper and stainless steel, 6.12 m. high Bronze Copper, 3.60 m. high Bronze on freestone Steel, red & white granite, 2 m. high
PETRUS CAMPER SUPPORT SOUNDSTONES GRACE FIGURES	Vf-room Groningen University, Holland 16 sculptures, Philips L.S., Dronen, Holland Q.L.T. trophy, Philips Hong Kong, China. 16 small memorial family sculptures AIDN/Auro D. street bank, Groningen, Holland	1999	Steel, 1.8 m Steel and stone, 80 cm Bronze on green marble, 5.1 cm. Bronze, 16 cm. Steel, height 2 m.
JAN GERKO WIEBENGA MONTICOLI RE TICKED OFF PEAT-SHEPPIING ATTACHMENT THIS OTHER PERSON PEAT-SHEPPIING FIGURED FASHION	Hanze Academy, Groningen, Holland Biannual trophy Jan Wouderman Foundation Design for shopping centre, Groningen, Holland Cingelkolk, Zwartsluis, Holland Fronnie Jelle collection, Utrecht, Holland Former Vice President Philips DAP 63 miniatures from the Zwartsluis commission Bertin Fashion Co., Assen, Holland	2000	Steel portrait, 3 m. high. Bronze, 45 cm. Estimated 6 m. high Steel, granite and fountains, 5 m. 3 Bronzes on freestone, 60 cm. White granite, steel, stainless steel, 70 cm. Copper, steel, green marble, 60 cm. Steel, height 1.20 m.
GAMMA GARDAN FACE TO FACE	Acad. for Communication, Groningen, Holland RBO, education brokers, Groningen Holland Lank Seters Collection	2001	Steel, 4.5 mtr. 7 x 50 cm. high steel and red granite Steel and granite, 1.75 m.
PEAT PERSPECTIVES HUGGING MONSTERS RAFTER XXV	Bergcomagnie, Holland Cromsrijen, Holland Steel Calculators Centre, Groningen, Holland	2002	3 monumental sculptures, 3, 3.5 and 4.75 m. Bronze on steel base, 1.6 m Steel on metal
OUTLAWED LII AND III CROSSING BORDERS MEMORIAL for a friend MEMORIAL GRUTTO STIPES DETOI EMEL	Kornelja Park, Groningen, Holland Scheerewold, Community of Bergen, Holland North of Holland Groningen, Holland Lokhorst Collection Baart Collection Philips Singapore	2003	3 coated steel monuments 6, 8.5 mtr. Stone, steel, bronze, 3.90 mtr. High No specifications due to privacy Copper, steel and granite, 2.50x90x100 cm. Coated steel on French limestone Bronze on basalt, 65 cm. 6 Small sculptures, bronze, copper, brass
MILKBOATMAN TRACK TEACH TIMES PORTRAIT PROF. FABER	Village of Bets-Scheerloo, Holland Dronen, Holland Inst. of Physics and Maths.	2004	Coated steel, length 3.5, high 2.75 mtr. Coated steel and granite, 4.5 mtr high Groningen University Coated steel, height 90 cm.
SOUTHERN SEASIGHT MOVING ART ORANGE A HEART CREATES	City of Dronen, Holland Chinese-Dutch Art project for Nanjing companies Introduction and follow-up. Social Aid Organisation, Groningen, Holland	2005	Green marble, bronze, steel, 3.5x5x7 mtr.
HOBOWITZ POPSARS SOUND FRIENDSHIP MOVING TOGETHER FOOD FOR THOUGHTS ART unlimited DSM FREEDOM IS IN THE MIND	Philips DAP Amersfoort, Holland City of Leeuwarden, Holland Rading Collection Gift Ed. Shai, GM of DSM Fine Intermediates Gift Ed. Price, para GM DSM Film Intermediates 4 sculptures for DSM Jining, Nanjing, China Prince Claus Conservatory, Groningen	2006	Quality Award 2005 Design for Academy of Pop Culture Steel, green marble and bronze, 65 cm. Resin, 40 cm. high Steel, brass, stone, 70 cm. high Compositional, various materials and sizes Coated Steel, 2 x 6 x 0.5 mtr.